

COLLEGE TRANSFER & CAREER TECHNICAL

Quick Reference Guide

REQUIREMENTS:

- Junior or senior in North Carolina Public, Private or Homeschool
- Complete SCC paper application for high school students.
- Textbooks and other required materials must be purchased by the student (or high school).
- Student/parent are responsible for transportation to/from seat-based classes.

COLLEGE TRANSFER PATHWAY:

- 2.8 unweighted high school GPA (*current official transcript required*)
- OR
- Demonstrate "college readiness" on an approved test or tests. Eligibility may be demonstrated by achieving the required scores on a single test or by combining test scores from any of the approved assessments.

COLLEGE TECHNICAL PATHWAY:

- At least 2.8 unweighted high school GPA or a recommendation letter from the principal.

Career Transfer pathways will allow a student to BEGIN working on Universal General Education Transfer Core (UGETC) classes. Additional classes will be required to complete an associates degree.

Students may be in a College Transfer Pathway AND a Career Technical Certificate, or two Career Technical Certificates, but NOT two College Transfer Pathways.

Courses may be taken in any order, except courses with required pre-requisites.

When a student completes ALL courses in a pathway, he or she may take other classes required for the degree, diploma or certificate.

No course substitutions are allowed.

To maintain eligibility for continued enrollment, a student must: (1) continue to make progress toward high school graduation and (2) maintain a 2.0 GPA in college coursework.

CONTACT:

➡ **April McNiff** (*Macon County*)
 High School Partnership Coordinator
 828.339.4465
 a_mcniff@southwesterncc.edu

➡ **Jodie Waldroup** (*Swain County & Qualla Boundary*)
 High School Partnership Advisor &
 GEAR UP Coordinator
 828.339.4424
 j_waldroup@southwesterncc.edu

➡ **Laura Allen** (*Jackson County*)
 NC Career Coach
 828.339.4217
 l_allen@southwesterncc.edu

ccp@southwesterncc.edu
 www.southwesterncc.edu/career-and-college-promise

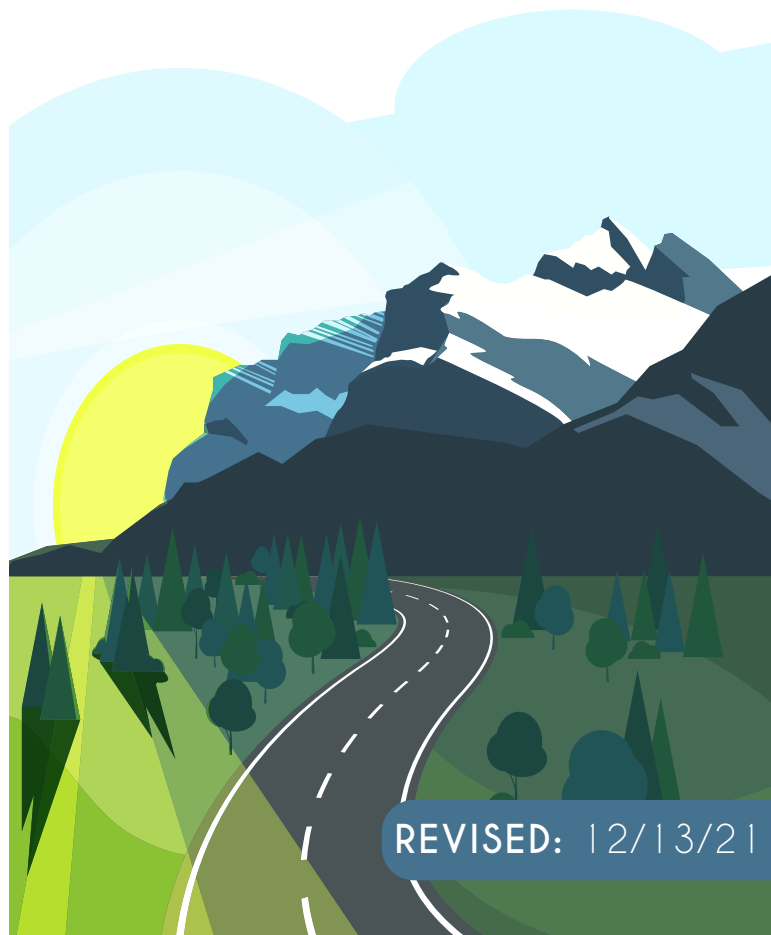


447 College Drive • Sylva, North Carolina 28779



CAREER & COLLEGE PROMISE

OPPORTUNITIES FOR HIGH SCHOOL STUDENTS!



REVISED: 12/13/21

COLLEGE TRANSFER PATHWAYS

- Associate in Arts for Non-STEM Majors - (AA-P1012C)
- Associate in Science for STEM Majors - (AS-P1042C)
- Associate in Arts Teacher Preparation - (AATP-P1012T)
- Associate in Science Teacher Preparation - (ASTP-P1042T)
- Associate Degree Nursing Pathway - (ADNP-P1032C)

ENGLISH/COMPOSITION:
 All College Transfer Pathways - Two required.

Courses	Hours	Pre-req
ENG 111 Writing & Inquiry	3	
ENG 112 Writing/Research	3	ENG 111
ENG 114 Professional Research & Reporting (ADNP option only)	3	ENG 111

HUMANITIES/FINE ARTS/COMMUNICATIONS:
 AA & AATP: COM 120 or 231 & 2 additional courses
 AS & ASTP: COM 120 or 231 & 1 additional course
 ADNP: HUM 115 only

Courses	Hours	Pre-req
ART 111 Art Appreciation	3	
ART 114 Art History Survey I	3	
ART 115 Art History Survey II	3	
COM 120 Intro to Interpersonal Comm.	3	
COM 231 Public Speaking	3	
ENG 231 American Literature I	3	ENG 112 or ENG 114
ENG 232 American Literature II	3	ENG 112 or ENG 114
ENG 241 British Literature I	3	ENG 112 or ENG 114
ENG 242 British Literature II	3	ENG 112 or ENG 114
HUM 115 Critical Thinking (Only for ADNP)	3	
MUS 110 Music Appreciation	3	
MUS 112 Intro to Jazz	3	
PHI 215 Philosophical Issues	3	ENG 111
PHI 240 Introduction to Ethics	3	ENG 111

SOCIAL/BEHAVIORAL SCIENCES:
 AA: Choose 3 from at least two different subjects.
 AS: Choose 2 from at least two different subjects.
 AATP: Choose 2 from at least two different subjects
 ASTP: Choose 1 course
 ADNP: PSY 150 & 241 only

Courses	Hours	Pre-req
ECO 251 Principles of Microeconomics	3	
ECO 252 Principles of Macroeconomics	3	
HIS 111 World Civilizations I	3	
HIS 112 World Civilizations II	3	
HIS 131 American History I	3	
HIS 132 American History II	3	
POL 120 American Government	3	
PSY 150 General Psychology	3	
PSY 241 Develo. Psychology (Only for ADNP)	3	PSY 150
SOC 210 Introduction to Sociology	3	

NATURAL SCIENCES
 AS & ASTP: Choose 1 pair of courses

Courses	Hours	Pre-req & Co-req
BIO 111 General Biology I	4	
BIO 112 General Biology II	4	BIO 111
CHM 151 General Chemistry I	4	MAT 171 & High School Chemistry
CHM 152 General Chemistry II	4	CHM 151
PHY 151 College Physics I	4	MAT 171 or 271
PHY 152 College Physics II	4	PHY 151
PHY 251 General Physics I	4	MAT 271 & MAT 272
PHY 252 General Physics II	4	MAT 272 & PHY 251

AA & AATP: Choose 1 course

Courses	Hours	Pre-req & Co-req
AST 111 & 111A Descriptive Astronomy/Lab	4	
BIO 110 Principles of Biology	4	
BIO 111 General Biology I	4	
BIO 168 Anatomy and Physiology I (Only for ADNP)	4	
BIO 169 Anatomy and Physiology II (Only for ADNP)	4	
CHM 151 General Chemistry I	4	MAT 171 & High School Chemistry
PHY 110 & 110A Conceptual Physics/Lab	4	

*Students may not take both BIO 110 & BIO 111.

MATHEMATICS

AA & AATP: Choose one course

Courses	Hours	Pre-req
MAT 143 Quantitative Literacy	3	
MAT 152 Statistical Methods I	4	
MAT 171 Pre-calculus Algebra	4	

AS & ASTP: Choose two courses

Courses	Hours	Pre-req
MAT 171 Pre-calculus Algebra	4	
MAT 172 Pre-calculus Trigonometry	4	MAT 171
MAT 271 Calculus I	4	MAT 172
MAT 272 Calculus II (Only for ASTP)	4	MAT 271

AATP & ASTP: Other required courses

Courses	Hours	Pre-req
SOC 225 Social Diversity	3	
EDU 187 Teaching & Learning for All	4	
EDU 216 Foundations of Education	3	

Required Class for All Pathways: ACA 122 College Transfer Success

OPTIONAL GENERAL EDUCATION HOURS (1-2 classes) - A student may take 1-2 foreign language courses designated as General Education in the CAA as a part of either College Transfer pathway. These courses are NOT part of the UGETC. Students who complete these courses with a grade of "C" or better may receive transfer credit. The receiving university will determine whether the courses will count as general education, pre-major, elective credit, or none.

Acceptable Test Scores for College Transfer

Test	PSAT	Pre-ACT & ACT	SAT	RISE
English	26	18	480	Tier 1 & 2: 270
Reading	26	22		
Mathematics	24.5	22	530	Tier 1, 2 & 3: 270



CAREER TECHNICAL PATHWAYS

Accounting Certificate (STEM) Pathway Code: C25800CP

Courses	Hours	Pre-req
ACC 120 Principles of Financial Accounting	4	
ACC 121 Principles of Managerial Accounting	4	ACC 120
ACC 129 Individual Income Taxes	3	
ACC 150 Accounting Software Applications	2	ACC 120
CIS 110 Introduction to Computers	3	

Air Conditioning, Heating & Refrigeration Technology Certificate Pathway Code: C35100CP Basic AHR classes are offered in the fall.

Courses	Hours	Pre-req
AHR 110 Introduction to Refrigeration	5	Fall Course
AHR 112 Heating Technology	4	AHR 110
AHR 113 Comfort Cooling	4	AHR 110

Automotive Systems Technology Certificate (STEM) Pathway Code: C60160CP

Courses	Hours	Pre-req
TRN 110 Introduction to Automotive	2	Fall Course
TRN 120/120A Basic Transportation Electricity and Lab	5+1	Fall Course
AUT 141 Suspension & Steering Systems	3	Spring Course
AUT 151/151A Brake Systems & Lab	3+1	Spring Course
AUT 181 Engine Performance I	3	Summer Course

Business Administration Certificate Pathway Code: C25120CP

Courses	Hours	Pre-req
ACC 120 Principles of Financial Accounting	4	
BUS 110 Introduction to Business	3	
BUS 137 Principles of Management	3	
CIS 110 Introduction to Computers	3	
MKT 120 Principles of Marketing	3	Fall Course

Business Administration Technology Certificate Pathway Code: C25120TC

Courses	Hours	Pre-req
ACC 115 College Accounting	4	
CIS 110 Introduction to Computers	3	
CTS 130 Spreadsheet	3	
MKT 232 Social Media Marketing	4	

Carpentry Certificate Pathway Code: C35180CP

Only offered at Swain & Franklin High Schools.

Courses	Hours	Pre-req
CAR 111 Carpentry I	8	
CAR 112 Carpentry II	8	CAR 111

Criminal Justice Certificate Pathway Code: C55180CP

Courses	Hours	Pre-req
CJC 111 Introduction to Criminal Justice	3	Fall Course
CJC 112 Criminology	3	Fall Course
CJC 113 Juvenile Justice	3	Spring Course
CJC 131 Criminal Law	3	
CJC 212 Ethics and Community Relations	3	Spring Course
CJC 231 Constitutional Law	3	

Culinary Arts Certificate Pathway Code: C55150CP

Classes are taught on the SCC Jackson Campus.

*Select classes taught at Franklin, Swain and Smoky Mountain High Schools.

Courses	Hours	Co-req
CUL 110 Sanitation & Safety	2	Fall Course
CUL 112 Nutrition for Foodservice	3	Fall Course
CUL 135/135A Food & Beverage Service/Lab	2+1	Fall Course
CUL 140 Culinary Skills I	5	Fall Course
CUL 160 Baking I	3	Fall Course

Early Childhood Education Certificate Pathway Code: C55220CP

Courses	Hours	Pre-req
EDU 119 Intro to Early Childhood Education	4	Fall Course
EDU 144 Child Development I	3	Fall Course
EDU 145 Child Development II (highly recommend students take EDU 144 before 145)	3	Spring Course
EDU 131 Child, Family & Community	3	Spring Course

Emergency Medical Science Certificate (STEM) Pathway Code: C45340CP

Courses	Hours	Pre-req
ACA 111 College Student Success	1	
BIO 163 Basic Anatomy & Physiology	5	Satisfactory Test Scores
EMS 110 EMT * Fees apply. Requires background check & drug screening	8	Co-req: ACA 111

Information Technology (STEM)

These programs are only offered online.

Software and Web Development Certificate Pathway Code: C25590DC

Courses	Hours	Pre-req
WEB 110 Internet/Web Fundamentals	3	
CIS 115 Intro to Programming & Logic	3	Satisfactory Test Scores
CSC 121 Python Programming	3	
CSC 151 JAVA Programming	3	CIS 115
CSC 251 Advanced JAVA Programming	3	CSC 151
DBA 120 Database Programming I	3	WEB 110

Network Management - CISCO Certificate Pathway Code: C25590NC

Courses	Hours	Pre-req
NET 125 Intro to Networks	3	
NET 126 Routing Basics	3	NET 125
NET 225 Routing & Switching I	3	NET 126
NET 226 Routing & Switching II	3	NET 225

Network Management - Operating System Certificate Pathway Code: C25590C2

Courses	Hours	Pre-req
NOS 110 Operating Systems Concepts	3	
NOS 120 Linux/UNIX Single User	3	NOS 110 or CET 211
NOS 130 Windows Single User	3	NOS 110 or CET 211
NOS 230 Windows Administration I	3	NOS 110

Network Management - Support & Services Certificate Pathway Code: C25590SC

Courses	Hours	Pre-req
CTS 115 Info Systems Business Concepts	3	
CTS 120 Hardware/Software Support	3	
CTS 155 Technical Support Functions	3	
CTS 250 User Support & Software Evaluation	3	

Mechatronics Basic Certificate (STEM) Pathway Code: C40350CP

All classes taught in Sylva at the SCC Jackson Campus.

Courses	Hours	Pre-req
ATR 112 Intro to Automation	3	
ELC 128 Intro to PLC	3	ELC 131
ELC 131 Circuit Analysis	4	
ISC 112 Industrial Safety	2	
MEC 130 Mechanisms	3	

Medical Assisting Certificate (STEM) Pathway Code: C45400CP

This program is only offered online.

Courses	Hours	Pre-req
MED 110 Orientation to Medical Assisting	1	
MED 118 Medical Law & Ethics	2	
MED 121 Medical Terminology I	3	
MED 122 Medical Terminology II	3	MED 121
MED 130 Admin. Office Procedures I	2	
MED 131 Admin. Office Procedures II	2	MED 130

Medical Office Administration Certificate Pathway Code: C25310CP

Courses	Hours	Pre-req
ACA 111 College Student Success	1	
OST 164 Office Editing	3	
MKT 223 Customer Service	3	
MED 121 Medical Terminology I	3	
MED 122 Medical Terminology II	3	MED 121
OST 149 Medical Legal Issues	3	

Nurse Aide (STEM) Pathway Code: C45840CP

*Students must be 16-1/2 years old at the time of registration for NAS 101. Additional costs/fees apply.

Courses	Hours	Pre-req
NAS 101 Nurse Aide I	6	
NAS 102 Nurse Aide II	6	NAS 101
MED 121 Medical Terminology I	3	
MED 122 Medical Terminology II	3	MED 121

Office Administration Certificate Pathway Code: C25370CP

Courses	Hours	Pre-req
ACA 111 College Student Success	1	
CIS 110 Introduction to Computers	3	
OST 131 Keyboarding	2	CIS 110
OST 136 Word Processing	3	
OST 164 Office Editing	3	
OST 184 Records Management	3	
MKT 223 Customer Service	3	

Welding Technology Certificate Pathway Code: C50420CP

Classes taught at SCC Jackson Campus, Franklin & Swain High School.

Courses	Hours	Co-req
WLD 110 Cutting Processes	2	WLD 141
WLD 141 Symbols & Specifications	3	WLD 110
WLD 115 SMAW Stick Plate	5	
WLD 121 GMAW MIG FCAW / Plate	4	
WLD 131 GTAW TIG Plate	4	