

# 2019 SUMMER

WORKFORCE  
Continuing Education



## COURSE SCHEDULE

### Table Gaming

Training school expands to Jackson Campus

INSIDE:  
Page 16



INSIDE

Instructor wins statewide award  
Nurse Aide classes forming  
News about this year's Gala

828.339.4426

[www.southwesterncc.edu/workforce-innovations](http://www.southwesterncc.edu/workforce-innovations)

### COURSE LISTINGS

- 3 Kids College
- 4 College & Career Readiness
- 5 Professional Licensure
- 6 Personal Enrichment
- 8 Small Business Center
- 12 Workforce Education
- 14 Online Workforce Education
- 20 Public Safety Training
- 24 Heritage Arts

# GENERAL INFORMATION

## CONTACT INFORMATION

Toll Free Number	1.800.447.4091
General Information	339.4426
College & Career Readiness	339.4272
Defensive Driving	339.4656
Emergency Medical Services	306.7044 OR 306.7053
English Language(ESL)/Civics	339.4620
Fire and Rescue	306.7045
GED & HiSet Testing	339.4486
Heritage Arts	366.2005
Human Resources Development	306.7020
Law Enforcement	306.7043 OR 306.7046
Job & Career Preparation	306.7020
Motorcycle Rider	306.7041 OR 306.7040
Nursing Assistant	339.4305 OR 339.4331
Personal Enrichment	339.4657
Professional Licensure	339.4657
Small Business Center	339.4211 OR 339.4426
Transcripts	339.4426 OR 339.4206
Workforce Education	339.4218

## REGISTRATION FEES

Registration fees are due at the time of registration. Students are not enrolled until all registration fees are paid. Registration fees, supplies fees, technology fees, insurance fees, and book fees, if required, are listed with each course listing.

## ELIGIBILITY

Admission is open to adults who are at least 18 years old and who are not enrolled in public school. 16-18 year olds may enroll in some courses. Students under 18 years of age may enroll in summer classes specifically for the younger student. Only individuals who have registered and paid may attend class.

## REFUND POLICY

Registration fee refunds are granted only under the following circumstances:

- A student who officially withdraws from an extension class(es) prior to the first class meeting shall be eligible for a 100 percent refund. Also, a student is eligible for a 100-percent refund if an applicable class is canceled.
- After the respective class begins a 75-percent refund shall be made upon the request of the student if the student officially withdraws from the class prior to or on the 10-percent point of the scheduled hours of the class. Note: This rule is applicable regardless of the number of times the class meets or the number of hours the class is scheduled to meet.
- A 100-percent refund shall be made if the student officially withdraws from a contact hour class prior to the first day of class of the academic semester or term or if the college cancels the class. A 75-percent refund shall be made if the student officially withdraws from a contact hour class on or before the tenth calendar day of the class.
- **Self-supporting classes are not eligible for refunds.**

## CONTINUING EDUCATION CREDIT

For occupational extension classes, Continuing Education Units (CEUs) are allowed. One CEU may be given for each 10 contact hours of participation in class.

## DISCLAIMER

The classes presented in this publication should not be considered a contract between SCC and any student. Changes or errors may occur for various reasons. A minimum number of students may be required before a class can be conducted. Pre-registered students will be contacted if changes or class cancellation is necessary.

Please visit [www.southwesterncc.edu/workforce-innovations/class-schedule](http://www.southwesterncc.edu/workforce-innovations/class-schedule) for the most current class schedule.

## SAFE DRIVING PROGRAM



Have you received a minor traffic citation or ticket recently? If you have, you may be eligible to complete a four-hour defensive driving course. By completing the course, drivers could save money on their insurance, keep points off their licenses and sharpen their driving skills.

For more info, visit [www.southwesterncc.edu/dd](http://www.southwesterncc.edu/dd) or call 828.339.4656.

## WEBSITE

Scan the QR code below for more information on our Workforce Continuing Education classes.



Southwestern Community College is accredited by the Southern Association of Colleges and Schools Commission on Colleges to award associate degrees. Contact the Commission on Colleges at 1866 Southern Lane, Decatur, Georgia 30033-4097 or call 404.679.4500 for questions about the accreditation of Southwestern Community College.

### Identification Statement:

An Equal Opportunity Institution • Printed April 2019. Issue 2  
447 College Drive, Sylva, NC 28779

50,000 copies of this publication were printed at a cost of 18¢ each. SCC sells ads in its class schedules to help offset printing costs. For advertising information, please contact us at 828.339.4000. Distributed free, published 3 times a year.

# KIDS COLLEGE

Parents, make the most of this summer by registering your kids for one or more classes in SCC's youth enrichment programs. Students ages 10-15 can choose from several different topics, and we even have a few online classes available. Call 828.339.4426 or [ldowns@southwesterncc.edu](mailto:ldowns@southwesterncc.edu).

## SUMMER CAMP

**Be A TREP!** This Summer EnTREPrenurial Camp is geared to students with an interest in entrepreneurship for any rising 6th, 7th, 8th or 9th grader in Fall of 2019. The purpose of this camp is to give students the opportunity to explore the world of entrepreneurship. Through fun games, activities, group projects, and a business simulation, students will learn business and marketing strategy, teamwork, and essential problem-solving and leadership skills. Every day is filled with interesting and challenging activities to help students learn the fundamentals of entrepreneurship and creating a start-up business. Each student develops an idea for a business that he or she can start individually or as a group and on the final day pitch his or her idea in front of a panel of "Judges" in the form of a contest.

7/22-7/26 9A-3P Jackson \$50

**Full STEAM Ahead Summer Camp** (96 hrs.) Program and operate large-scale robotic telescopes from all around the world! Crack codes! Solve natural mysteries! Map the music of the stars! From atoms to astronomy, from molecules to music, this camp explores the mysteries of the universe and the world around us! Call 828.339.4218 or email [d\\_rogers@southwesterncc.edu](mailto:d_rogers@southwesterncc.edu) for more details.

Jackson Campus  
M-Th 6/10-7/11 12-6P \$635



*To encourage and promote the development of a safe, efficient and affordable transportation system that meets the mobility needs of all Swain County citizens.*

To schedule a trip, please call:

**828.488.3213**

Hours of service:  
7 a.m. to 4 p.m. • Monday-Friday  
125 Brendle St. • Bryson City, NC

## SEF-3001-Creating Mobile Apps with HTML5: (24 hrs.)

Do you want to make mobile apps that run on iPhone and iPad, as well as on Android, and Windows Phone? Sure you do! Do you want to learn five different programming languages? Of course you don't! Fortunately, you're about to discover a better way to build apps. In this course, you'll learn how to imagine, design, build, and optimize a cross-platform mobile app using the very latest HTML5 standards. The result will be a mobile app that's fast and runs on just about any smartphone or tablet computer. For more info call, 828.339.4656

Self-Supporting Online \$75

## SEF-3001-Drawing for the Absolute Beginner: (24 hrs.)

You'll gain a solid understanding of the many tools of the trade. You'll become intimately familiar with paper types, drawing styles, rendering techniques, and the basic principal of perspective, layout, design, lighting, volume, and space. You'll even discover how best to get in touch with your right brain. For more info call, 828.339.4656

Self-Supporting Online \$75

## SEF-3001-How To Get Started in Game Development: (24 hrs.)

This course will prepare you to start developing your own games. You'll start by learning the fundamentals of game development and get an overview of game genres, platforms, and audiences. Next, you'll learn tools and techniques to help you make better design decisions and achieve greater efficiencies as you develop your own games. For more info call, 828.339.4656

Self-Supporting Online \$75

## CSP 4000- Dance Camp: (15 hrs.)

If your 12-15 year old loves to dance, this week at SCC is for them! Learn flexibility and warm up techniques, explore various dance styles (introductory level), including jazz/theater, ballroom, regional/cultural, and traditional performance. Increase creativity through team work, using new skills to build short sequences together. Learn choreography from the instructor for a short performance piece over the week.

Jackson Campus, Bradford Gym  
M-F 6/17-6/21 9A-Noon C. Akers \$75

## CSP 4000- Sewing Camp: (15 hrs.)

If your 12-15 year old enjoys clothes and crafts, have them learn sewing at SCC. This week long camp will teach basic sewing techniques, terminology, seams and fabric types. Learn to thread a machine and bobbin correctly and use various stitches. Each class builds your skills with fun, take-home, finished projects. Sewing Machines available for use, or bring your own machine.

Self-Supporting Jackson Campus, Burrell Rm 303  
M-F 6/17-6/21 9A-Noon M. Buscher \$100

# COLLEGE & CAREER READINESS

**College and Career Readiness classes** are held at convenient times and locations each week to meet the needs of adults with busy lives. For more information about SCC's College and Career Readiness, visit [www.southwesterncc.edu/college-and-career-readiness](http://www.southwesterncc.edu/college-and-career-readiness).

## High School Equivalency

For more information contact Donna Wilson at 828.339.4272 or [d\\_wilson@southwesterncc.edu](mailto:d_wilson@southwesterncc.edu)

### Sylva

Oaks Hall	Rm 104	MWTH	9A-12P
Oaks Hall	Rm 104	MW	6-9P
Mountain Projects		TTH	4:30-7:30P

### Bryson City

Swain Center	Rm 101	TTH	5:30-8:30P
--------------	--------	-----	------------

### Cherokee

Ginger Lynn Welch Complex	Conf. Rm.	TTH	9A-12P
		TTH	6-9P

### Franklin

Macon Annex	Rm 101	MTWTH	8:30A-12:30P
Macon Campus	Rm 228	MTH	5P-8P

## Job and Career Preparation (HRD)

The course is structured on an open-entry, open-exit basis to meet the customized needs of the participants, is self-paced and provides lecture as well as individual attention. During the lab, participants assess and identify job interests, learn advanced job-search techniques, learn to make their resumes stand out, develop interviewing skills, discover the importance of social media and networking, earn their Career Readiness Certificate and much more.

The course is free to the unemployed. Walk-ins are welcome. Come by at any time during lab hours to register. For more information, contact Melanie Price at 828.366.2023 or [m\\_price@southwesterncc.edu](mailto:m_price@southwesterncc.edu).

### Sylva

Oaks Hall	Rm 104	T	9A-2P
-----------	--------	---	-------

### Bryson City

Swain Center	Rm 111	W	9A-2P
--------------	--------	---	-------

### Franklin

Macon Annex	Rm 104	TTH	9A-12P
Macon Campus	Rm 228	M	9-11A
		TH	12:45-2:15P

## English Language Acquisition (ELA) / Civics

For more information, contact Jennifer Yowell at 828.339.4620 or [j\\_yowell@southwesterncc.edu](mailto:j_yowell@southwesterncc.edu)

### Clases de ingles (ELA)

Sylva			
Oaks Hall	Rm 105	MTW	9A-12P
Oaks Hall	Rm 105	TTH	6-9P

### Franklin

Macon Annex	Rm 105	MW	9A-12P
Macon Campus	Rm 108	MW	6-9P

## Announcing a NEW BOOTCAMP!

Get your High School Equivalency in  
**5 weeks!**

**Dates:** May 28 - June 26

**Time:** 8:30A - 12:30P

**Graduation ceremony:** July 11

**Locations:** Sylva & Franklin

**To sign up call** 828.339.4272

## High School Equivalency (GED®/HiSET)

SCC offers free classes in Jackson, Macon, and Swain counties to prepare you for the high school equivalency tests. Sign up to test by going to [www.GED.com](http://www.GED.com) or [www.hiset.ets.org](http://www.hiset.ets.org). Just a few easy-to-follow steps will create a GED® or HiSET account. Select Southwestern Community College as your test center, select the date and time you want to test, pay online and then you are ready to test! Call Devonne Jimison at 828.339.4486 for information on our classes or testing.

# PROFESSIONAL LICENSURE

For more details, please visit - [www.southwesterncc.edu/workforce-innovations/professional-licensure](http://www.southwesterncc.edu/workforce-innovations/professional-licensure)  
Call or email for more information - Brian Hollands 828.339.4657 or [b\\_hollands@southwesterncc.edu](mailto:b_hollands@southwesterncc.edu)

**AUT 3129 - NC Auto Safety Inspection Certification** (8 hrs.) This course covers the inspection rules and procedures of a public inspection station. Upon completion, a student should understand the rules, regulations and procedures for safety inspections, be able to properly perform a vehicle safety inspection, and be prepared to sit for the state certification exam.

Jackson Campus, Summit, Room 127

MT	5/13-5/14	6-10P	R.Frady	\$70
MT	6/24-6/25	6-10P	R.Frady	\$70
MT	7/22-7/23	6-10P	R.Frady	\$70

**MLS 3874 - Notary Public Education** (7 hrs.) This course covers the qualifications, procedures and certification for becoming a notary. Students completing this course with a passing exam grade, are eligible to apply for certification with the NC Secretary of State's office. Requirements: High school diploma or GED, at least 18 years of age and legal resident of the USA. Students must: Bring current valid photo ID to class and purchase and read through the 2016 Notary Public Guidelines for North Carolina before class begins. (Book available in the SCC Bookstore.)

Jackson Campus, Burrell, Room 303

Th	6/27	9A-5P	R.Cedrone	\$70
T	7/23	9A-5P	R.Cedrone	\$70
Th	8/29	9A-5P	R.Cedrone	\$70

Macon Campus, Cecil Groves Center, Room 212

T	6/18	9A-5P	R.Cedrone	\$70
W	7/17	9A-5P	R.Cedrone	Rm 110 \$70
T	8/20	9A-5P	R.Cedrone	\$70

**SEF 3001- Spanish for Medical Professionals:** (16 hrs.) This course will provide healthcare professionals with the fundamental tools needed to effectively communicate with their Spanish-speaking patients and families.

Jackson Campus, Burrell, Room 303

Th 6/27-8/15 5:30-7:30P L. Costantino \$85 *Self-Supporting*

**SEF 3874 - Electronic Notary Public Education** (4 hrs.)

This course is designed for currently commissioned Notaries who want to become commissioned as an electronic notary also. Topics include legal, ethical and procedural requirements of the Notary Act set forth in the General Statute 10B Article 2. Upon completion of this course with a passing exam grade of 80%, a person is eligible to make application with the NC Secretary of State office. Individuals must have current notary commission to participate in E-notary training. For more information, go to [www.secretary.state](http://www.secretary.state), especially the Electronic Notary Frequently Asked Questions section.

\* Students must bring to class a valid state, federal, or tribal ID and the Electronic Notarization Manual.

To be added to the waitlist for this course call or email Brian Hollands (Info listed above).

**AIR CONDITIONING  
HEATING  
PLUMBING**

Residential & Commercial  
Service & Installation  
No travel charge • Financing available  
Credit cards accepted

**828.586.WARD | WWW.WARDPH.COM**  
(9273)

**TUESDAY IS  
College Day!**

Southwestern Community College  
students and faculty receive 25% OFF  
any meal on Tuesdays.  
*Must present valid ID.*

**ZAXBY'S**

VALID AT THIS LOCATION ONLY:  
284 E. Main St. • Sylva  
(828) 631-3100

Limited-time offer. Valid at the location above, on Tuesdays only. © 2016 Zaxby's Franchising LLC. "Zaxby's" is a registered trademark of Zaxby's Franchising LLC. Each Zaxby's restaurant is independently owned and operated under a license agreement with Zaxby's Franchising LLC.

## PERSONAL ENRICHMENT

For more details, please visit - [www.southwesterncc.edu/workforce-innovations/personal-enrichment](http://www.southwesterncc.edu/workforce-innovations/personal-enrichment)

Call or email for more information - Brian Hollands 828.339.4657 or [b\\_hollands@Southwesterncc.edu](mailto:b_hollands@Southwesterncc.edu)

### BUSINESS

**CSP 4000- QuickBooks:** (16 hrs.) Learn QuickBooks accounting software, Desktop or Online. Setting up your business, Products/Services, Inventory, A/P, A/R, Proposals, Banking, Reports, Automation and Payroll.  
Macon Campus, Room 108 *Self-Supporting*  
TTh 5/28-6/20 8:30-10:30A T. Vernon \$75

### COMPUTERS

**CSP 4000- Basic Computers:** (6 hrs.) This course includes everything needed to start exploring the world of technology. By the end of the course, students will be able to communicate with family and friends using email, explore any subject, write letters, recipes, and other documents, and track assets.  
\*This class is strictly for beginners, so don't hesitate because you are afraid you won't be able to keep up!  
Macon Campus, Room 108 *Self-Supporting*  
T 6/4-6/25 6-7:30P S. Hanson \$45

### CRAFTS

**CSP 4000- Papercrafting; Making Cards and Gifts:** (18 hrs.) Students will be guided through step-by-step instructions to personally complete and take home a variety of Spring/Summer themed Papercraft projects. Techniques learned will range from beginner to advanced, however no prior experience is required. Tuition includes all materials except glue needed to create weekly projects. Students should buy Tombo liquid glue (4oz). Course Projects may include Greeting Cards; Packaging (Boxes, Bags, Gift Card Holders) and July Fourth or Picnic Items.  
Jackson Campus, Burrell, Room 102A *Self-Supporting*  
M 6/3-7/1 5:30-8:30P T. Muphy \$115

**CSP 4000- Basic Sewing:** (15 hrs.) Learn basic sewing techniques, terminology, seams and fabric types. *(Students will need to purchase approximately \$25 in materials. Machines available for use, or bring your own machine).*  
Jackson Campus, Burrell, Room 303 *Self-Supporting*  
M 7/1-7/29 5:30-8:30P M. Buscher \$75

**CSP 4000- Couponing:** (6 hrs.) In store or Online, newspaper coupons, store flyers, apps and websites, combining sales and coupons, expired coupons, etc.  
Macon Campus, Room 108 *Self-Supporting*  
T 7/9-7/30 6-7:30P S. Hanson \$35

### LANGUAGE

**CSP 4000- Beginning Spanish:** (16 hrs.) This course will introduce students to the basic vocabulary and grammar of the Spanish language, as well as, Spanish culture.  
Jackson Campus, Burrell, Room 303 *Self-Supporting*  
T 6/25-8/13 5:30-7:30P L. Costantino \$85

**CSP 4000- Advanced Spanish:** (16 hrs.) This course will build upon the basic vocabulary and grammar of the Spanish language learned in Intermediate Spanish. This is the perfect course for anyone who wants to improve their Spanish language skills. Films, games, music and food as well as an interactive multi-media approach will be used. This is a personal enrichment course, therefore the focus will be on learning while having fun doing it – no exams, no pressure!  
*Self-Supporting*  
Jackson Campus, Burrell, Room 303  
M 8/5-9/23 5:30-7:30P L. Costantino \$85

**CSP 4000- American Sign Language:** (30 hrs.) This class will provide a basic and adequate vocabulary in sign language which the student can use to communicate effectively with those who are deaf.  
Macon Campus, Room 215 *Self-Supporting*  
T 5/28-8/13 5:15-7:45P C. Brantley \$125

### SPEAKING AND WRITING

**CSP 4000- An Introduction to Voiceovers:** (*Getting Started in Voice Acting*) Students will learn about the different types of voiceovers and tools needed to find success. One-time, 90-minute, introductory class. *Self-Supporting*  
Online, On-Demand class. \$49

**CSP 4000- Better COMMUNICATION in Social Media™:** Better COMMUNICATION in Social Media™ is an 8-week practical online writing course that gives YOU – lifelong (adult/community education, personal enrichment, workforce training) learner or ESL (English as a second language) learner – a private community where you learn to think in different ways about the world. Learn more at [www.worlitop.com/bcism](http://www.worlitop.com/bcism) *Self-Supporting*  
Online, 6/1-7/26 \$195

### WELL-BEING

**CSP 4000- Essential Oils:** (8 hrs.) Learn to identify true essential oils, understand and practice safe use of essential oils, identify complimentary personal wellness and health practices with essential oils and put into practice or modify essential oil habits in order to improve wellness.  
Jackson Campus, Burrell, Room 303 *Self-Supporting*  
T 7/9-7/30 5:30-7:30P C. Akers \$55

### WINE

**CSP 4000- Wine Tasting:** (8 hrs.) Learn about how wine is made, styles of wine, how to store and serve wine, evaluating wine, pairing wine with food, and more. Cost includes wine that will be sampled in class. Must be 21 or older to enroll. *Self-Supporting*  
Jackson Campus, Bradford Hall Dining Room  
M 5/27-6/17 5:30-7:30P W. Dunn \$65



## SCC Electrical Contracting instructor wins statewide award

*"What I enjoy most about teaching is being in a room with like-minded people," Buchanan said. "Sometimes, I learn as much as the students. I like what I do; it's all I've ever done."*

When James Buchanan was 18 years old, he started working in the electrical trade. He never left.

More than four decades later, he's still in the field and spends some of his spare time sharing his knowledge and experiences with others as an adjunct faculty member in Southwestern Community College's Workforce Continuing Education division.

The N.C. Board of Examiners of Electrical Contractors was so impressed with Buchanan's teaching prowess that the group recognized him as its Instructor of the Year. He received the award on April 10 in Raleigh.

"What I enjoy most about teaching is being in a room with like-minded people," Buchanan said. "Sometimes, I learn as much as the students. I like what I do; it's all I've ever done."

Buchanan is the assistant director as well as training and education coordinator for the Jackson County Code Enforcement Department.

He has taught electrical contracting at SCC's Jackson and Macon Campuses for more than seven years, and he holds an N.C. Electrical Contractor's License as well as five level three Standard Certificates from the N.C. Code Officials Qualifications Board.



"We are extremely fortunate to have someone with Mr. Buchanan's experience and knowledge serving as an instructor," said Brian Hollands, Director of Business and Community Training for SCC. "He does an outstanding job, and I'm thrilled that the N.C. Board of Examiners have recognized his efforts."

For more information about SCC's Business and Community Training, contact Hollands at 828.339.4657 or [b\\_hollands@southwesterncc.edu](mailto:b_hollands@southwesterncc.edu).



**GREEN ENERGY PARK**

*We turn trash into treasure, garbage into gas and problems into opportunities.*

Open for tours & classes  
Rental studios  
for glass & metal

[www.jcgep.org](http://www.jcgep.org)  
(828) 631-0271

## SMALL BUSINESS CENTER

Southwestern Community College's Small Business Center (SBC) is proud to serve small business owners and entrepreneurs with complimentary seminars, a resource center, and one-on-one counseling. As part of a network of experienced SBC's across North Carolina, we're dedicated to helping small businesses thrive. Our SBC understands the unique challenges that local businesses encounter, and we're ready to offer professional advice and instruction.

For more information about your local SBC, to reserve your seat or to request one-on-one confidential counseling visit [www.ncsbc.net](http://www.ncsbc.net) or contact us at 828.339.4426. Pre-registration required. There is no charge for these seminars.



## National Small Business Week Seminars

### Selling Online Today

Do I need an Online Presence? One way to expand your small business is to sell products online. Developing a revenue stream from online sales is an easy way for small businesses to increase their profits. Learn what sites work best to sell your product or service. We will explore the features of well-known e-commerce hosts such as the eBay Store, Shopify, Amazon.com, and Etsy as well as other options for creating an online store. At the end of this session, you will be able to understand whether you need to sell online and what are the risks and costs; understand your online store options are, or your own website; and understand the differences between platforms and determine what is right for you.

Th 5/2 6-8P LiveStream

### How to Write a Business Plan

A business plan can be the most important tool a small business owner has. Learn how to turn your ideas into a solid plan for financing and long-term success. This seminar teaches you the important components of a business plan and helps you lay the foundation for a winning plan. Find out how marketing, operations, and finance are inter-related.

Th 5/2 5:30-8:30P Franklin Chamber

### BREAKTHROUGH Business Marketing Summit

Join us for our BREAKTHROUGH Business Marketing Summit! This one-day summit will have two tracks, one for new startups and one for existing businesses. Whether you're a non-profit, for-profit, new or seasoned business, this event will be full of great marketing and sales information and resources for you! Break through the barriers and develop a successful marketing strategy for your business during our one-day marketing summit! **Lunch will be provided!** **Location:** Jackson Campus Burrell 102 A-D

M 5/6 9A-5P

#### • Session 1 and 2:

Video Marketing for the Camera Shy, part 1 **OR**  
The Power of Branding and Marketing Promotion

#### • Session 3 and 4:

Video Marketing for the Camera Shy, part 2 **OR**  
Interactive Pop-Up Shop in the World of Branding

#### • Session 5 and 6:

Creating a Customer Profile **OR**  
Facebook Made Easy

#### • Session 7 and 8:

Get Started with Canva and Design Your Own  
Marketing Materials **OR**  
Instagram for Beginners

## SMALL BUSINESS CENTER



# Grow with Google

SCC Small Business Center is teaming up with Google to help small businesses get online and grow with several free workshops during National Small Business Week. Small businesses are the growth engine of our economy, creating 2 out of 3 net new jobs. And businesses that are online grow 40% faster than those that aren't. We can help small businesses connect with more customers by helping them get online and on the map.

### Get Found on Google Search and Maps

Explore Google My Business, a free tool for local businesses who want to connect with customers on Google Search and Maps. Get hands-on help creating or updating your listing, and take advantage of a free website.

T 5/7 8:15-9:30A SBC

### Give Your Website a Refresh

Make sure your business shows up online—for free! Help people in your city find you by getting your business on Google Search and Maps with FREE SEO techniques from a professional SEO agency and Google!

T 5/7 9:45-11A SBC

### Livestream Viewing Party with Google - Drive Business Results with Google Ads

This livestream event will focus on teaching the basics of advertising online with Google Ads.

W 5/8 12-1P Swain Center

### Get Found on Google Search and Maps

Explore Google My Business, a free tool for local businesses who want to connect with customers on Google Search and Maps. Get hands-on help creating or updating your listing, and take advantage of a free website.

Th 5/9 8:15-9:30A Franklin Chamber

### Build a Local Search Presence

As a Grow With Google Partner, SCC's SBC is hosting various local events to help our small business community get found online by providing access to tools, resources, reports and products that teach business owners how to expand and polish their online presence. Learn how businesses can get in front of customers in their area. We'll discuss consumer trends related to local searches, and share best practices for using Google My Business features, like posts and reviews, to help build your search presence.

Th 5/9 9:45-11A Franklin Chamber

### Selling on Shopify

The eCommerce Platform Made for You. Whether you sell online, on social media, in store, or out of the trunk of your car, Shopify has you covered. Your brand, your way. No design skills needed. Establish your brand online with a custom domain name and online store. With instant access to hundreds of the best-looking themes, and complete control over the look and feel, you finally have a gorgeous store of your own that reflects the personality of your business. Everything in one place. Selling your products in many places should be every bit as simple as selling in one. With Shopify's ecommerce software, you get one unified platform to run your business with ease. Let us show you how.

Th 5/9 6-8P LiveStream



# Distinguished Alumni Award

EMS graduate Kyle Dowling receives SCC's inaugural Distinguished Alumni honor



tinguished Alumni Award. He'll be honored at SCC's graduation ceremonies on May 18.

"We were extremely impressed by the quality and achievements of all the nominees, particularly considering this is the first year we've offered this award," said Dr. Don Tomas, SCC President. "Our selection committee had several strong candidates from which to choose, but Kyle's nomination ultimately stood out. I could not be more proud of this young man and all the success he's attained so early in his career. We have no doubt he'll continue to impact our communities in positive ways for many years to come."

In addition to his role with Harris EMS, Dowling serves as a Per Diem Flight Paramedic for Air Methods out of Blairsville, Ga., providing pre-hospital advanced life support care to critically ill and injured patients.

Even with all the academic credentials and professional accomplishments, Dowling remains unwaveringly focused on helping the next patient in his care.

"Every day, I have the opportunity to make a difference in someone's life," Dowling said. "The program at SCC wasn't easy, but it had me ready for the job on Day One."

"When I applied for my current position at Harris EMS," Dowling added, "my cover letter contained the following statement: 'A firm education from a stellar, accredited institution has laid the foundation upon which I have built my professional career.' Without SCC, many of my accomplishments would not have occurred."



Dr. Don Tomas (left), Southwestern Community College President, shakes hands with 2013 graduate Kyle Dowling, winner of SCC's inaugural Distinguished Alumni Award.

As winner of SCC's Distinguished Alumni award, Dowling will receive an award plaque and also have his name listed along with all future winners on a separate plaque to be displayed prominently on Southwestern's Jackson Campus.

SCC's award was established as part of an effort to engage alumni and to showcase all the ways the college's graduates impact Jackson, Macon, Swain Counties, the Qualla Boundary and the surrounding region. The award was initiated by the SCC Foundation, and the selection committee was chaired by Dr. Mark Ellison, SCC's Director of Enrollment Management.

"I am truly grateful to our Foundation Faculty and Staff Advisory Council, which worked hard under Dr. Ellison's leadership to make this selection," said Brett Woods, Director of the SCC Foundation. "Every day, I am impressed by the way our college touches lives throughout – and beyond – our service area. One of our top priorities is reaching out to outstanding alumni like Kyle and the other nominees so that they know how proud we are of their accomplishments and all the ways they benefit the communities we serve."

Eric Hester, Southwestern's EMS Program Coordinator, nominated Dowling for the honor.

"While a student here, Kyle was one of only seven students in my 18 years to main-

tain a 4.0 GPA all the way through our program," Hester said. "In our career field, we very often encounter people in some of the most-terrifying moments of their lives. If ever someone in my family needs emergency medical services, Kyle is exactly the type of professional I would want to respond to that call."

In a letter supporting Dowling's nomination for the award at SCC, Harris EMS Manager Matthew Burrell wrote that Dowling "has always been willing to go the extra mile to obtain more knowledge. ... I fully believe that the education that he obtained while at Southwestern Community College was instrumental in him becoming the Paramedic and leader that he is today."

Stephen Plemmons, the Senior Director of Emergency Services for Harris Regional and Swain Community Hospitals, also endorsed Dowling's nomination.

"His dedication to his coworkers and the community is apparent in all his interactions with others, and his knowledge of prehospital emergency medicine is extraordinary," Plemmons wrote.



To learn more about the wide variety of ways you can support SCC students, contact Woods at 828.339.4241 or b\_woods@southwesterncc.edu.

For more information about Southwestern, visit [www.southwesterncc.edu](http://www.southwesterncc.edu), call 828.339.4000 or visit your nearest SCC location.

It's only been six years since Kyle Dowling earned his Emergency Medical Science associate degree from Southwestern Community College, but he's already compiled a lifetime of achievements.

Within two years of graduation, he was elevated to the role of supervisor and training officer for Harris Regional Hospital's EMS Department. He's also earned his bachelor's degree from Western Carolina University as well as National Registry Paramedic, Critical Care Paramedic and Flight Paramedic certifications – along with more than a dozen other credentials.

He's certified to offer emergency care in two other states (Virginia and Georgia) all while earning the respect and esteem of former instructors, colleagues and his own supervisors.

Based on those accomplishments and his continued engagement with SCC, Dowling has received Southwestern's inaugural Dis-

**"Our selection committee had several strong candidates from which to choose, but Kyle's nomination ultimately stood out. I could not be more proud of this young man and all the success he's attained so early in his career. We have no doubt he'll continue to impact our communities in positive ways for many years to come."**

**-Dr. Don Tomas, SCC President**



WORKFORCE EDUCATION

**SEF-3001- Defensive Driving Course:** (4 Hrs.) This course will motivate drivers to change their behind-the-wheel behaviors and attitudes. It will give them key understanding, skills and techniques to avoid collisions and reduce future violations. The result is a more responsible driver who grasps best practices to prevent injury and death while operating a motor vehicle. This class is open to any individual or business wanting to increase their awareness of roadway safety. *Self-Supporting*

TO TAKE ADVANTAGE OF THE PROGRAM DRIVERS SHOULD REGISTER AND COMPLETE THE FOUR-HOUR COURSE BEFORE THEIR COURT DATE. THE COST OF THE COURSE IS A NON-REFUNDABLE \$75 (CASH ONLY). DRIVERS MUST THEN ENTER A WRITTEN PLEA AGREEMENT AND PLEAD GUILTY TO A LESSER CHARGE. COURT COSTS AND FINES WILL BE ASSESSED. YOU ARE NOT ELIGIBLE FOR THIS PROGRAM IF...

- YOU HAVE PAID OFF THE TICKET OR CITATION BEFORE CLASS.
- YOU HAVE A CDL AND YOUR VIOLATION OCCURRED WHILE OPERATING A COMMERCIAL MOTOR VEHICLE.
- YOU COMPLETED THE CLASS IN EXCHANGE FOR A PJC, OR OTHERWISE RECEIVED A PJC, IN THE LAST THREE YEARS.

\*\*SPEED ZONES 35 MPH OR LESS (UP TO 20 MPH OVER LIMIT)  
 \*\*SPEED ZONES 45 MPH OR MORE (UP TO 15 MPH OVER LIMIT)

**Jackson Campus, Founders, Room 117**

SEF-3001	S	6/1	9A-1P
SEF-3001	T	6/18	6-10P
SEF-3001	T	7/16	6-10P
SEF-3001	T	7/30	6-10P
SEF-3001	T	8/13	6-10P

**Macon Campus, Room 205**

SEF-3001	S	5/18	9A-1P
SEF-3001	T	6/4	6-10P
SEF-3001	T	7/2	6-10P
SEF-3001	S	7/27	9A-1P
SEF-3001	S	8/3	9A-1P

**SEF-3001- Attitudinal Dynamics of Driving:** (8 Hrs.) **COST: \$125 (CASH ONLY) NON-Refundable.** If you have been charged with one of the violations listed below, you may qualify for the Defensive Driving (8 hr.) Class. DDC-ADD is an 8-hour course that addresses the attitudes and behaviors of the negligent driver. Interactive exercises, lectures, visuals and thought provoking discussions are used to teach responsibility on the road. The DDC-ADD class must be completed within the time ordered by the court. *Self-Supporting*

You **MAY** be eligible for this program if your traffic citation is for:

- Careless and reckless - 20-141.6
- Speeding in a school zone - 20-141.1
- Speeding in a work zone - 20-141 (j2)
- Speeding more than 20 mph over posted speed limit

\*\*You must have written permission from the Office of the District Attorney

Registration for defensive driving courses must be completed in person. We cannot complete registrations by phone or online at this time.

Must register five business days prior to start of class.

Refunds will NOT be granted for failure to attend class.

Defensive Driving Classes are Self Supporting and are ineligible for refunds.

**Jackson Campus, Founders Hall**

S	5/11	9A-6P	Rm. 117
S	6/22	9A-6P	Rm. 117
S	8/3	9A-6P	Rm. 117

**\*Completing a DDC class does not guarantee reduction and/or dismissal of any charges.**

For more information, call 828.339.4656. Self-Supporting classes are not eligible for refunds.

To pre-register for any of our Workforce Education classes, or if you do not see a profession represented and would like to request training, call **828.339.4218** or email **d\_rogers@southwesterncc.edu**.

**ACC-3240: Local Government Finance in North Carolina:** (21 hrs.) This course is an overview of the basics of local government finance in North Carolina from a very practical perspective. \* This course is a hybrid class with both classroom and online content. Class meets in person every-other Monday  
 SCC Jackson Campus, Founders 124  
 M 8/5-12/11 6-9P W. Brothers \$70

**AER 3103: Private Pilot Ground School:** (60 hrs.) This course is a study of aerospace history, weather, navigation, instruments, preflight planning, computer and wind triangles, regulations, radio communications, the aviation field and procedures necessary to become a safe private pilot. Sstudents are prepared to pass the written examination required by the government. Required text: ASA 2019 Private Pilot Test Prep Package  
 Macon Campus, Room 106  
 MW 6/3-8/21 6:30-9P M. Bryson \$180+Book

**ELC-3119-Electrician Helper Academy:** (220 hrs.) This course is designed to cover the principles of electrical wiring as it applies to commercial/residential applications. Emphasis is on Ohm's law, alternating and direct currents, series circuits, parallel circuits and series parallel circuits, use of electrical tools and equipment, wiring materials and many other special subjects.  
 Jackson Campus (Room TBA)  
 M-W 8/5-12/11 5-9P \$180

**HOS-3007-Bartending:** (24 hrs.) This course will assist students in becoming a professional bartender. The course will include information on making drinks, Alcoholic Beverage Control requirements, information on Training for Intervention Procedures (TIPS) Certification, Responsible Alcohol Server Program Materials, drink recipes, using proper amounts, mixes, glassware and garnishes. Students must be at least 21 years of age.  
 Jackson Campus, Balsam, Room 153  
 TTh 6/18-7/11 6-9P A. Blazer \$70

**ISC-3600-Craft Beer Brewing:** (40 hrs.) This course is designed as an introduction to craft beer brewing, and to prepare students for entry-level work in the industry of brewing.  
 Jackson Campus, Balsam, Room 153  
 MW 6/17-7/17 5-9P M. Norman \$125

**OSH-3013-OSHA 10 Hour Construction Outreach:** (10 hrs.) This course is designed for construction workers, foremen, job supervisors, and anyone involved in the construction industry. (Students must bring a check in the amount of \$5 for the card processing fee on the last night of class).  
 Jackson Campus, Burrell, Room 302  
 MT 8/5-8/13 5-8P K. Allen \$70

**MLA 3022-Phlebotomy:** (203 hrs.) This course provides theory and clinical experiences needed for the proper collection of blood and other specimens used for diagnostic testing. Contact Latresa Shuler at 828.339.4425.

**Classroom Portion** - Jackson Campus, Balsam  
 MW 8/14-10/9 1-3P \$180+\$5TF  
**Clinical Portion**  
 T,Th,F 10/22-12/17 8A-2:30P  
 Additional fees: Insurance \$45.00, Book \$104.50, Background \$130.00 and Immunizations cost.

**RLS-3700-NC Real Estate Pre-Licensing:** (84 hrs.) This course meets the educational requirement for the North Carolina real estate broker license. It prepares you to pass the real estate broker examination administered by the N.C. Real Estate Commission (NCREC). Topics include basic real estate principles and practices, financing, closing, valuation, fair housing, property management, taxation and math. Additional topics include land use, insurance, real estate license laws, rules and regulations.  
 Macon Campus  
 TTh 8/6-10/15 5:30-9:30P R. Cooney \$180+Textbooks

**RLS-3702-NC Real Estate Post-Licensing 301 Broker Relationships & Responsibilities:** (30 hrs.) Real Estate Broker required training to assist the provisional broker to meet the 90-hour post-licensing educational requirements set forth by the North Carolina Real Estate Commission. For more information, go to [www.ncrec.state.nc.us/](http://www.ncrec.state.nc.us/). Textbook required: current edition of the NC Real Estate Manual.  
 SCC Macon Campus, Room 106  
 T 6/11-7/9 9A-3:30P R.Cooney \$125

**SAF-4000-Flagger Training:** (4 hrs.) This certification course teaches the basic procedures and operations needed to become a Flagger. This course will provide each participant with the knowledge, skill, and responsible attitude to control traffic through work zones (safely-effectively-quickly).  
 Jackson Campus, Burrell, Room 302  
 M 6/10 5-9P K. Allen \$70

**SEF-4000-Commercial Drone Pilot Training:** (22 hrs.) This instructor led class prepares students to successfully pass their FAA Part 107 Exam and become a certified drone pilot. Aviation, safety, weather, aeronautical decision making and much more is covered including hands-on flying.  
 Jackson Campus, Burrell, Room 302 *Self-Supporting*  
 M-F 6/3-6/8 5:30-9:30P, B. McGuire \$500  
 9A-12P(S)

**WLD-3106: Week-Long Welding Workshop:** (20 hrs.) This week-long workshop will serve as a survey of common welding processes and an introduction to welding. Students will gain knowledge about welder safety, cutting, proper techniques, MIG, TIG, and Stick Welding.  
 Jackson Campus, Summit Welding Lab  
 M-F 5/20-5/24 8:30A-12:30P K. Robinson \$70

# WORKFORCE EDUCATION

## TABLE GAMES DEALER TRAINING SCHOOL

**GAM 3001-Blackjack:** (140 hrs.) SCC, in collaboration with Harrah's Cherokee Casino, is offering certification to help individuals enter the exciting gaming industry. This required two-part certification will teach the individual to proficiently deal the game, know the legal and regulatory aspects of gaming, operation of table gaming tools and equipment, accuracy and accounting skills, communication with players, card placement, chip handling, and understanding the casino industry and tourism environment. Harrah's Cherokee Casino Resort

T-F	4/30-6/14	7P-12A	\$180
T-F	6/4-7/19	11A-4P	\$180
T-F	7/9-8/23	7P-12A	\$180
T-F	8/13-9/27	11A-4P	\$180
Jackson Campus, Balsam, Room 152			
M-Th	5/20-7/30	8-11P	\$180

**Poker Dealer Training:** (112 hrs.) Proficiently deal Poker games, know the legal and regulatory aspects of gaming, obtain table management skills, operation of table gaming tools and equipment, accuracy and accounting skills, communication with players, customer service aspects of gaming, cheque handling, Open/Closing Table, and understanding the casino industry and tourism environment. Harrah's Cherokee Casino Resort

M-Th	4/29-6/14	12-4P	\$180
Jackson Campus, Balsam, Room 152			
M-Th	6/10-7/30	5-9P	\$180

## ONLINE WORKFORCE EDUCATION COURSES

**Classes start 1st Tuesday of each month 5/7, 6/4, 7/2, 8/6. Registration Fee: \$185**  
**Students must register five business days before the start date of the class and must log in and complete orientation within first week of class.**

**CET 3100- Online Computer Technician:** (288 hrs.) This course is specifically designed to prepare students for the CompTIA A+ certification exams.

**MNT 3200-Alarm System Installation:** (144 hrs.) This course introduces the student to the operation and skill standards for the alarm industry. Upon completion, the student will have the knowledge to sit for a national certification exam as an Alarm Security Technician. Students will be responsible for scheduling and sitting for exam. Exam cost is approximately \$210. Text Resources: NFPA 70 National Electrical Code 2014 & NFPA 72 National Fire Alarm & Signaling Code 2016.

**MED 3300-Online Electronic Health Records Office Professional:** (285 hrs.) Train for a new career as an Electronic Health Records Office Professional! In this career, individuals play an integral role in the daily operations of physician's offices and hospitals. Upon completion of the Electronic Health Records Office Professional program, you will be prepared for the appropriate certification exams.

**MED 3300-Online Medical Transcription Editor Part I:** (320 hrs.) This course is the first course in a two-part program designed to teach the student to transfer audio-recorded dictation into hard copy medical documents.

**MED 3300-Online Medical Transcription Editor Part II:** (320 hrs.) Learn to transfer audio-recorded dictation into hard copy medical documents. Online reference materials, student and technical support, personal employment consultations, contracts and pricing guide, referral letters, résumé examples, and a one-year help hotline are included. Must complete Part I to be able to register.

**MED 3300-Online Professional Medical Coding and Billing with Applied PCS Part 1:** (320 hrs.) AHIMA-approved, two-part course prepares students for the Certified Coding Associate (CCA) and Certified Professional Coder (CPC) certification exams.

**MED 3300-Online Professional Medical Coding and Billing with Applied PCS Part 2:** (320 hrs.) This course will include legal compliance, CPT/HCPCS Coding, Advanced ICD-10 Coding, Advanced Anatomy & Physiology, and Exam Prep.

**PHM 3250-Online Pharmacy Technician-Health Care Unit/Retail Training:** (245 hrs.) This course provides curriculum that will prepare a student to find employment (and success) as a pharmacy technician in the healthcare or retail setting. Preparation for a final exam that also serves as an opportunity for students to determine their readiness for the Pharmacy Technician Certification Board (PTCB) exam. An optional externship built into the program allows students to optimize their learning experiences in this course.

**MED 3300- Veterinary Office Manager:** (347 hrs.) This on-line training program through Career Step will allow you to gain the skills needed to work as a veterinary assistant or a medical office assistant in any type of medical facility. Students will gain knowledge in Microsoft Office, Business Writing, Animal Safety, Client Management, Patient Management, Pharmacy and Pharmacology, Laboratory and Surgical Procedures, Medical Law and Ethics, Medical Office Procedures, Basic Anatomy, and Medical Office Management. This program prepares students to sit for the CMAA (Certified Medical Administrative Assistant) certification exam.

# SCC ONLINE COURSES

## ED2GO

New classes start on 6/12, 7/17, 8/14  
 You must register at least five business days before the course begins

SCC offers eight-week online courses that provide education and training in a variety of areas! The courses are designed by a team of professionals from each respective field who work to provide you with an effective web-based learning experience. Prior to your course start date, you will receive a reminder e-mail that includes instructions on how to access the classroom website. Courses are hosted on ed2go's learning management system (LMS). Each program includes a set of lessons/modules and evaluations.

When you visit our website, instructions are readily available and easy to follow.  
 For additional information, please contact Vita Nations at 828.339.4656 or vitan@southwesterncc.edu

## COMPUTER

**CIS 3165-Photoshop CC for the Digital Photographer:** (24 hrs.) This course offers simple, step-by-step instructions for basics of Photoshop. \$75

**CIS 3165-Introduction to InDesign CC:** (24 hrs.) This course is applicable to any version of InDesign CS4 or newer. \$75

**OST 3100-Microsoft Excel-Pivot Tables:** (24 hrs.) Most organizations rely heavily on Microsoft Excel pivot tables to analyze and report financial information. Students will learn how to work with the numerous pivot table options and system settings to become skilled in developing useful analysis models and reports. \$75

## NONPROFIT MANAGEMENT

**COM 3727-Get Grants!:** (24 hrs.) Over this 6-week course, students will learn the step-by-step process of grant proposal writing, whether it be a federal grant, one from a national private foundation or a smaller grant from local foundation. Students will also learn about both federal and foundation grant writing, how to develop successful, grant-fundable proposals, how to recognize what makes a project attractive to a funding agency and see how to create a compelling case. In just a few weeks, students will be prepared to convert an idea into a complete, well-developed package. This course is highly recommended for development professionals, educators, nonprofit agency staff members or volunteers, and anyone else involved in fundraising for a large or small organization. \$75

**MKT 3419-Marketing Your Nonprofit:** (24 hrs.) This course will show students how to use powerful marketing techniques to compete more effectively for customers, donors, members, and volunteers. Students will also learn how to persuade the media to communicate an organization's message and further its ideals and goals. \$75

**MKT 3419-WOW! What A Great Event!:** (24 hrs.) This course reveals proven tips, tools, techniques and procedures used by experts and master event planners. Students will discover how to select the right suppliers for food, decorations, entertainment, and learn how to effectively employ them within budgetary constraints. Students will get easy access to event industry information compiled by and for professional event planners. Students will be pointed in the right direction to meet other event and meeting planners and to join a professional association or industry group. \$75

**MLS 3710-Nonprofit Fundraising Essentials:** (24 hrs.) Students will explore the skills needed to become successful at fundraising, where the best corporate and foundation fundraising jobs are and how to apply for them. Course topics include: every area of nonprofit fundraising, annual funds, special events, corporate relations, foundation relations, major gifts, planned giving, and capital campaigns. In addition, students will be given real-life examples of writing projects, as well as, fundraising software tools that can be used to track efforts and enhance the results. \$75

## PROJECT MANAGEMENT FUNDAMENTALS SERIES

**LOG 3400 - Project Management Applications** (24 hrs.) In this six-week course, an experienced Project Management Professional will teach you the same powerful tools and techniques that experienced project management professionals rely on every day. \$75

## TEACHER PROFESSIONAL DEVELOPMENT

**EDU-3200-Creating the Inclusive Classroom: Strategies for Success** (24 hrs.) In this professional development course for teachers, you'll get the training you need to reach the diverse mix of students you face every day—learning proven strategies for inclusion that turn diversity into opportunity. With a mix of students who have learning disabilities, neurobiological disorders, and physical challenges, the modern classroom requires an efficient and effective teacher who can prioritize under tight deadlines and be creative on demand. \$75

**EDU-3001-Spanish in the Classroom:** (24 hrs.) This class starts with the basics of Spanish pronunciation, and then moves right into simple words. Then you'll learn more of the basics of conversational phrases, family names, and directions. Next, we'll get into what it's like on the first day of school as we go over words related to enrolling new students, conversing in the classroom, talking about rules and behavior, and basic vocabulary for various academic subjects. We'll also cover Spanish words and phrases to use in the cafeteria, on the playground, and in the nurses office! Finally, we'll delve into some survival phrases for the parent-teacher conference as you learn to describe how a child is doing, talk about academic or behavior problems, and discuss grades and homework. Please ensure your school is eligible to issue professional development units, and that the course is approved by your professional learning coordinator. \$75





# NEW table-gaming school offered in Sylva

“As fast as we’re growing we really need help getting employees trained! Our partners at Southwestern are doing a great job at training the workforce to meet our specific needs.”  
- Brooks Robinson, SVP & GM, Harrah’s Cherokee Casino

Are you in the market for a **new career path?**

Or are you just looking to score some extra cash on the weekends?

Either way, SCC can prepare you for one of the region’s highest-paying jobs.

Southwestern’s table-gaming school is fun, takes only two months, costs less than \$200 and can now be completed entirely at the college’s Jackson Campus.

Upon successful completion of the course, graduates are eligible for employment at Harrah’s Cherokee Casino Resort.

“Our goal is to make these classes available to anyone who’s working or already taking daytime college classes,” said Scott Sutton, SCC’s Dean of Workforce Continuing Education. “Harrah’s Cherokee

Casino Resort has a tremendous need for dealers. For a small financial investment and minimal time commitment, you can complete this class and land one of the top-paying jobs in our region.”



The training is offered through a co-operative effort with Harrah’s, and classes are taught by industry professionals.

SCC’s classes teach participants how to deal the respective games, know the legal and regulatory aspects of gaming, operation of table-gaming tools and equipment – as well as every other skill needed to succeed in this fast-paced industry.

Classes are also offered at the Table Gaming School inside Harrah’s Cherokee Casino Resort. All students start out with either a blackjack or poker course then can move on to other table games including roulette, craps and more.

Tuition for each is \$180.

For more information or to enroll, contact Scott Sutton at 828.339.4296 or [scotts@southwesterncc.edu](mailto:scotts@southwesterncc.edu).

# Nurse AIDE

Jump start your career!

**APPLY TODAY!**

Do you **genuinely** enjoy helping other people?

Within **one semester**, you can receive the training you need to land a **great job**. Nurse Aide is a **Gateway** to many of SCC's 13 other Health Sciences programs.

.....

**Summer CE2 Nurse Aide Classes:**

Prefix	Number	Course Title						
	Section #	Days	Start Time	End Time	Start Date	End Date		
NUR	3240	<b>Nurse Aide I</b>						
	U-2700	MTW	9:00 AM	3:30 PM	5/28	8/7		
	U-2701	MTWTH	5:30 PM	9:30 PM	5/16	7/31		
	U-2702	MTW	9:00 AM	3:30 PM	5/28	8/7		
	U-2703	MTWTH	5:30 PM	9:30 PM	5/16	7/31		

For more information on Nurse Aide courses visit,  
[www.southwesterncc.edu/health-sciences/nurse-aide](http://www.southwesterncc.edu/health-sciences/nurse-aide)



**CITY LIGHTS CAFÉ**

Eats, Spirits, Espresso Bar

**10% off to faculty  
& students with ID**

3 E. Jackson Street · Sylva, NC  
[CityLightsCafe.com](http://CityLightsCafe.com)



**For more information:**

To learn more, contact program coordinator, Donna Conner.

828.339.4459

[d\\_conner@southwesterncc.edu](mailto:d_conner@southwesterncc.edu)



## PUBLIC SAFETY TRAINING

The Jerry Sutton Public Safety Training Center (PSTC) is a division of Southwestern Community College (SCC). SCC-PSTC is located within the Macon County Industrial Park, on Highway 64-West. The facility is primarily dedicated to coordinating Public Safety Training Programs (EMS, Fire/Rescue, and Law Enforcement) to all agencies within the SCC service area and beyond.

### EMERGENCY MEDICAL SERVICES

Pre-registration is required for all EMS certification courses. Courses may also be cancelled due to insufficient enrollment. For more information or to enroll in EMS training contact Todd Sumner at 828.306.7044 or [todds@southwesterncc.edu](mailto:todds@southwesterncc.edu). You may also search for and register for classes here: [www.southwesterncc.edu/pstc/ems-class-schedule](http://www.southwesterncc.edu/pstc/ems-class-schedule)

**BLS for Healthcare Providers:** This course is for healthcare professionals who need to know how to perform CPR, as well as other lifesaving skills, in a wide variety of in-hospital and out-of-hospital settings. **6/26** Call for additional dates.

**EMS Instructor Methodology-online:** This course is designed to meet the requirements of the Office of EMS for those individuals who are seeking to become a North Carolina Level I EMS Instructor. Call for more information & dates.

**Heartsaver CPR, AED & First Aid:** This course is for anyone with limited or no medical training who needs a course completion card in first aid, CPR and AED use to meet job, regulatory or other requirements. **6/26** Call for additional dates.

**Tactical Combat Casualty Care (TCCC):** Created by the U.S. Department of Defense Committee on TCCC (Co-TCCC) to teach evidence-based, life-saving techniques and strategies for providing the best trauma care on the battlefield. NAEMT conducts TCCC courses as specified by the Co-TCCC's guidelines and curriculum. Two types of TCCC courses are offered:

- TCCC-MP (TCCC for Medical Personnel) is a 2-day classroom course for military medical personnel including medics, corpsmen, and pararescue personnel deploying in support of combat operations.
- TCCC-AC (TCCC for All Combatants) is a 1-day classroom course for non-medical military personnel and includes first responder skills appropriate for soldiers, sailors, airmen and marines. Call for more information and offering dates.

**Advanced Emergency Medical Technician (AEMT):** The primary focus of this course is to provide basic and limited advanced emergency medical care and transportation for critical and emergent patients who access the emergency medical system. This individual possesses the basic knowledge and skills necessary to provide patient care and transportation. The Advanced Emergency Medical Technician is a link from the scene to the emergency health care system. **6/3** Call for more information.

**Pre-Hospital Trauma Life Support (PHTLS):** PHTLS is developed by the National Association of Emergency Medical Technicians in cooperation with the American College of Surgeons Committee on Trauma. The Pre hospital Trauma Life Support PHTLS course is a unique continuing education program created in recognition of the real need in EMS education for additional training in the handling of trauma patients. This indispensable program is designed to enhance and increase knowledge and skill in delivering critical care in the prehospital environment. Call for more information.

**Advanced Medical Life Support:** NAEMT's Advanced Medical Life Support (AMLS) course is the first EMS education program that fully addresses how to best assess and manage the most common medical crises in patients, offering a "think outside the box" methodology. It is for all levels of practitioners with a strong commitment to patient care, including emergency medical technicians, paramedics, nurses, nurse practitioners, physician assistants, nurse anesthetists and physicians. The course emphasizes the use of scene size-up, history, interactive group discussion on potential treatment strategies, and physical exam to systematically rule out and consider possibilities and probabilities in treating patients' medical crises. The course offers an initial assessment-based approach that progresses to a diagnostic-based approach to quickly develop the best treatment plan. Call for more information.

**Emergency Medical Responder:** The primary focus of the Emergency Medical Responder is to initiate immediate lifesaving care to critical patients who access the emergency medical system. This individual possesses the basic knowledge and skills necessary to provide lifesaving interventions while awaiting additional EMS response and to assist higher level personnel at the scene and during transport. Emergency Medical Responders function as part of a comprehensive EMS response, under medical oversight. Emergency Medical Responders perform basic interventions with minimal equipment. The class consists of 72 hours didactic and hands-on patient scenario training. **6/18** Call for more info.

**OnLine Continuing Education:** Our online continuing education courses will be offered for both BLS as well as ALS providers. **Online 5/6** Call for more information

**EMS Technical Scope of Practice Evaluations:** Call for appointment.

**Emergency Medical Technician -** The primary focus of the Emergency Medical Technician is to provide basic emergency medical care and transportation for critical and emergent patients who access the emergency medical system. This individual possesses the basic knowledge and skills necessary to provide patient care and transportation. Emergency Medical Technicians function as part of a comprehensive EMS response, under medical oversight. Call for more information

## FIRE AND RESCUE

SCC offers a wide variety of fire and rescue training courses in cooperation with individual fire and rescue departments in Jackson, Macon, Swain Counties and the Qualla Boundary. For a current listing of course offerings, visit [www.southwesterncc.edu/pstc/fire-rescue](http://www.southwesterncc.edu/pstc/fire-rescue) or contact **Benji Johnson at 828.306.7045** or [b\\_johnson@southwesterncc.edu](mailto:b_johnson@southwesterncc.edu).

**FIP 3000: Firefighter Academy:** (458 hrs.) This State accredited program is designed to prepare entry level individuals with the cognitive and physical skills to become certified firefighters. The Fire Academy, upon completion, will enable the graduate to be certified to work as a Firefighter in the State of North Carolina or any other IFSAC or Pro-Board Compliant state pending completion of the Firefighter certification test. SCC-PSTC Spring 2020

**FIP: 6400 NC RIT Course:** (40 hrs.) This block course covers all three required parts of the NC Rapid Intervention Team (NCRIT) Certification course series as outlined by the NC Fire and Rescue Commission: FIP: 6401 NCRIT Mayday, FIP: 6402 NCRIT Firefighter Survival, and FIP: 6403 NCRIT Rapid Intervention. This transfers as one "all or nothing" block to the Office of State Fire Marshal (OSFM). Students who complete this course also satisfy the Mayday (FIP: 6401) and Safety & Survival (FIP:6402) courses in the Firefighter Certification. Call for more information.

**FIP: 3601 Emergency Vehicle Driver:** (20 hrs.) This course deals with the safe operation of emergency vehicles, driving skills, legal implications of emergency driving and departmental standard operating procedures. This course is a stand-alone certification and is also a prerequisite to Driver Operator certification by the North Carolina Fire Rescue Commission. Students must meet minimum age requirements (18 years of age or older. SCC-PSTC October 2019

**FIP: 3011: Fire Hose Stream and Appliances:** (20 hrs.) This course will teach students about the many types of fire hoses available to them and the applications of each. SCC-PSTC September 2019

**FIP: 3351 Haz Mat Level I Responder:** (40 hrs.) This course meets OSFM's training requirement for the Hazardous Materials Level One Responder credential. Course content includes lecture and practice activities needed to perform tasks safely and effectively. This will be a fast-paced course and will require outside reading. A practical exercise will be included. SCC-PSTC December 2019

**FIP: 3500 Strategy and Tactics for Initial Company Operations:** (20 hrs.) This course is designed for the firefighter or fire officer that will be establishing strategy and tactics on structure fires. SCC-PSTC December 2019

**FIP: 5710 TR VR Vehicle Rescue Block:** (48 hrs.) This five part series will provide the technical rescuer with the basic knowledge and skills needed to perform motor vehicle stabilization and patient extrications. Call for more information

**FIP: 6404 TR Water Block:** (48 hrs.) This block course covers all four required parts of the Technical Rescuer Water certification course series as outlined by the NC Fire and Rescue Commission. Cowee Fire Department October 2019

## LAW ENFORCEMENT

**CJC-3938: North Carolina - Basic Law Enforcement Training (NC-BLET):** (755+ hrs.) The North Carolina - Basic Law Enforcement Training course is a state-accredited program designed to prepare entry-level individuals with the cognitive and physical skills to become certified police officers and deputy sheriffs. **Tiffany Holland**, NC Law Enforcement Coordinator/Instructor, 828.306.7046 or e-mail at [tj\\_holland@southwesterncc.edu](mailto:tj_holland@southwesterncc.edu). SCC-PSTC

**CJC-3941: North Carolina - Detention Officer Certification Training (NC-DOCC):** (208 hrs.) The North Carolina - Detention Officer Certification Course is a state accredited program designed to prepare entry-level individuals with the cognitive and physical skills for eligibility as certified Detention Officers. **Mitch Boudrot**, LETP Director, 828.306.7043 or e-mail at [m\\_boudrot@southwesterncc.edu](mailto:m_boudrot@southwesterncc.edu). SCC-PSTC

**CJC-3928: General Instructor Training Course (NC-GI)** (80 hrs.) Prior to instructing any commission-mandated course or attending any of the Specialized Instructor Courses successful completion, application for, and granting of certification as a Probationary Instructor is required. **Mitch Boudrot**, LETP Director, 828.306.7043 or e-mail at [m\\_boudrot@southwesterncc.edu](mailto:m_boudrot@southwesterncc.edu). SCC-PSTC

**CJC-5055: National Park Service - Seasonal Law Enforcement Training - Basic Training Initiative (NPS-SLET/BTI) Program:** (767.5 Hrs.) Course information and application materials may be accessed online at [southwesterncc.edu/pstc/law-enforcement/national-park-service-nps](http://southwesterncc.edu/pstc/law-enforcement/national-park-service-nps). Applicants are required to meet all required qualifications. **Don Coleman, National Park Service - Law Enforcement Training Coordinator, 828.306.7055** or [d\\_coleman@southwesterncc.edu](mailto:d_coleman@southwesterncc.edu).

**CJC-3952: Mandated In-Service Training (MIST):** (Varies by Topic) These courses are designed to provide training in all topical areas for continued certification as a law enforcement officer. Traditional - **Bob Cook, Law Enforcement In-Service Training Coordinator, 828.306.7052** or [r\\_cook@southwesterncc.edu](mailto:r_cook@southwesterncc.edu).

**CJC-3934: Speed Measurement Instrument (SMI) Training - Basic RADAR Operator Training, RADAR Operator and RADAR/LIDAR Operator Recertification, Basic LIDAR Operator Training:** Basic Operator and Recertification courses for certified and employed local, state or federal law enforcement officers. The SMI training schedule can be accessed at <https://www.southwesterncc.edu/pstc/law-enforcement/speed-measurement-training>. **Curtis Dowdle, Dean of Public Safety Training, 828.306.7040** or [cdowdle@southwesterncc.edu](mailto:cdowdle@southwesterncc.edu).

For additional SCC-Public Safety Training - Law Enforcement Training Program information, please visit: [www.southwesterncc.edu/pstc/law-enforcement](http://www.southwesterncc.edu/pstc/law-enforcement).

NEW!

# Great Smoky Mountains Railroad SCHOLARSHIP FUND

*Thanks to one of the region's top tourist attractions, Southwestern Community College students will get an extra hand up toward earning their college degrees.*

The Great Smoky Mountains Railroad set up an annual scholarship fund through the SCC Foundation and will award a \$1,000 scholarship for each of the next 10 years.

Kim Albritton, Vice President and General Manager of the Great Smoky Mountains Railroad, signed the scholarship agreement with SCC officials on Tuesday, Feb. 26.

"Our top priority at Southwestern Community College is serving our students, and this generous gift from the Great Smoky Mountains Railroad will help bring a quality college education within reach for a number of our students over the next decade," said Dr. Don Thomas, SCC President. "We are extremely grateful to Kim and everyone at the Great Smoky Mountains Railroad for supporting our students."

The first scholarship will be awarded to a student this fall. Preference will be given to students from Swain County with a secondary preference for Jackson County residents.

Other factors that will be considered include financial need as well as a student's program of study with preference given to anyone pursuing a credential in Welding, Culinary Arts or Electronics Engineering Technology.

"The Great Smoky Mountains Railroad's success is largely based on its employees, many of whom are from the local communities that SCC serves," Albritton said. "We are fortunate to be able to give back to a deserving student from Swain or Jackson County with hopes that the certifications and/or degree earned at SCC

may come full circle with future employment opportunities in one of the many fields that support the railroad including Welding, HVAC, Electronics Engineering Technology and Culinary Arts."

Established in 1973, the SCC Foundation exists solely to support Southwestern's mission.

"Thanks to gifts like this one, we will be awarding scholarships to more students this fall than we ever have before," said Brett Woods, Director of the SCC Foundation. "This

generous donation will have a direct impact on our students' lives."

For more information about the Great Smoky Mountains Railroad Scholarship Fund or the SCC Foundation, contact Woods at 828.339.4241 or [b\\_woods@southwesterncc.edu](mailto:b_woods@southwesterncc.edu).

"We are fortunate to be able to give back to a deserving student from Swain or Jackson County with hopes that the certifications and/or degree earned at SCC may come full circle with future employment opportunities in one of the many fields that support the railroad including Welding, HVAC, Electronics Engineering Technology and Culinary Arts."

- Kim Albritton, Vice President/General Manager of the Great Smoky Mountains Railroad



Kim Albritton (center), Vice President and General Manager of the Great Smoky Mountains Railroad, recently established an annual scholarship through the SCC Foundation. Also pictured: Brett Woods (left), Director of the SCC Foundation, and Dr. Don Thomas, SCC President.



## A Gala to Support Scholarships



### SAVE THE DATE!

Saturday, Sept. 7



## NEW LOOK, SAME GALA!

*Pull on your blue jeans, put on your bling and come prepared to kick up your heels with us for our 6th Annual Gala!*

To purchase tickets or for sponsorship information, contact Kathy Posey at 828.339.4227 or visit [www.southwesterncc.edu/gala](http://www.southwesterncc.edu/gala)

## HERITAGE ARTS

### CERAMICS & POTTERY

**CSP 4000 - Intro to Clay:** This short class is a great introduction working with clay! Students will have the opportunity to hand build several pieces of pottery and try working with clay. Cost of materials is included. Prerequisite: None.

Swain Center, Room 125	2 hrs, 0CEU. Self-supporting		
S 5/18	10A-12P	J. Matthews	\$20
S 6/15	10A-12P	J. Matthews	\$20
S 7/20	10A-12P	J. Matthews	\$20
S 8/10	10A-12P	J. Matthews	\$20

**CSP 4000 - Intro to Wheel:** This short class is a great introduction to the potter's wheel! Students will have the opportunity to try out the potter's wheel and throw several pieces. Cost of materials is included. Prerequisite: None.

Swain Center, Room 125	2 hrs, 0CEU. Self-supporting		
S 5/18	1-3P	J. Matthews	\$20
S 6/15	1-3P	J. Matthews	\$20
S 7/20	1-3P	J. Matthews	\$20
S 8/10	1-3P	J. Matthews	\$20

**PRC 3104 - Skills Challenge:** Each class will focus on a different throwing challenge including, throwing taller and with fixed amounts of clay. Cost of materials not included. Prerequisites: Beginning Wheel and/or instructor's permission.

Swain Center, Room 125	24 hours, 2.4 CEU.		
MW 5/15-6/12	1-4P	S. Coe	\$70

**PRC 3104 - Joined Vessels:** This course will concentrate on the design and production of joined pieces from two smaller forms. At the conclusion of the course, students will be proficient in throwing a variety of joined pieces and utilization of hand building tools. Cost of materials not included. Prerequisites: Beginning Wheel and/or instructor's permission.

Swain Center, Room 125	36 hours, 3.6 CEU.		
TTh 5/21-6/27	10A-1P	K. Hubbs	\$125

**PRC 3104 - Advanced Wheel:** For intermediate to advanced students. Learn tips, tricks, and techniques to take your studio work to the next level. Students will focus on consistency, efficient use of materials, and experimentation. Cost of materials not included. Prerequisite: Intermediate Wheel or instructor's permission.

Swain Center, Room 123	63 hrs, 6.3 CEU.		
TTh 5/21-8/8	2-5P	J. McKee	\$180

**PRC 3104 - Pots from History:** Explore history through pottery! This course will cover four time periods and select pottery forms to replicate. Students will learn the techniques used, as well as, the functions of these pots. Cost of materials not included. Prerequisites: None.

Swain Center, Room 123	12 hours, 1.2 CEU.		
M 5/29-6/19	10A-1P	J. Marley	\$70
M 7/8-7/29	10A-1P	J. Marley	\$70

**PRC 3104 - Beg. & Inter. Wheel:** An Introduction to pottery making. Students will learn to center clay on a wheel, turn, trim, and glaze basic forms. Additional topics covered include the operation of a pottery studio, clay materials, kiln operation, basic pottery vocabulary, and safety. Cost of materials not included. Prerequisite: None.

Swain Center, Room 123	54 hrs, 5.4 CEU.		
TTh 5/30-8/8	10A-1P	E. Delfield	\$180

**PRC 3104 - Advanced Hand Building:** For intermediate to advanced students. Students will experiment a variety of forms utilizing slabs, coils, and extruded pieces. Emphasis will be on exploration, process, and decoration. Cost of materials not included. Prerequisite: Hand Building or instructor's permission.

Swain Center, Room 123	54 hrs, 5.4 CEU.		
TTh 5/30-8/8	2-5P	E. Delfield	\$180

**PRC 3104 - Glazing:** Students will learn the basic process of glazing pottery, including types of application, basic glaze formulas, as well as correlating firing methods. The class will culminate with a Cone 6 gas reduction firing. Cost of materials not included. Prerequisite: Beginning Wheel or instructor's permission.

Swain Center, Room 123	54 hrs, 5.4 CEU.		
TTh 5/30-8/8	6-9P	E. Delfield	\$180

**PRC 3104 - Hand Building for Raku:** Students will explore a variety of hand built forms finished in the Raku firing process. Forms will include decorative wall hangings, clocks, boxes, and animal effigies. Upon completion, students will demonstrate new forms and technics to finish their pottery. Cost of materials not included. Prerequisites: None.

Swain Center, Room 123	12 hours, 1.2 CEU.		
W 6/5-6/26	10A-1P	J. Matthews	\$70
W 7/10-7/31	10A-1P	J. Matthews	\$70

**CSP 4000 - Bonsai Pots:** Stop in for this short class and make a Bonsai Pot! Expect to make several small pots from a variety of techniques that can be used for succulents, bonsai or any small plants. Great for all ages, groups, or families. Your pot will be ready for pick up within 10 business days. Cost of materials included. Prerequisite: None.

Swain Center, Room 125	2 hrs, 0CEU. Self-supporting		
W 5/22	12:30-2:30P	J. Marley	\$22
W 6/5	3-5P	J. Marley	\$22
W 7/24	12:30-2:30P	J. Marley	\$22
W 8/7	12:30-2:30P	J. Marley	\$22

**PRC 3104 - Lidded Vessels:** Students will concentrate on lidded vessels with an emphasis on good design and production. At the conclusion of the course students will be proficient with at least four lid forms, including cutting lids from closed forms and the use of hand-building tools. Cost of materials not included. Prerequisites: Beg. Wheel or Instructor's permission.

Swain Center, Room 123	33 hours, 3.3 CEU.		
TTh 7/2-8/8	10A-1P	K. Hubbs	\$125

## HERITAGE ARTS

**CSP 4000 - Sgraffito & Mishima:** Make a mark in your pottery! With sgraffito, you put down a layer of color and scratch in a design. With mishima, scratch in the design and then fill it with color. Or use both on the same piece! Students should bring several leather hard pieces for this workshop. Cost of materials not included. Prerequisites: Beginning Wheel and/or instructor's permission.

Swain Center, Room 125	4 hours, 0CEU. Self-supporting		
F 7/26	10-2P	S. Coe	\$24

**CSP 4000 - Slip Trailing:** Learn how to add a new deminution of décoration to your pottery with slip! We'll cover several methods of slip trailing and application tips. Students should bring several leather hard pieces for this workshop. Cost of materials not included. Prerequisites: Beginning Wheel and/or instructor's permission.

Swain Center, Room 125	4 hours, 0CEU. Self-supporting		
F 8/9	10-2P	S. Coe	\$24

**CSP 4000 - Clay Basics:** Create a variety of hand built pottery in this series of short classes. Projects will include sculpture, trays, bowls, flowerpots, boxes, and many more! Cost of materials included. Prerequisite: None. Please contact the Cashiers Senior Center (828.745.6856) for more information or to register.

Cashiers Senior Center, Room 4	2 hrs, 0CEU. Self-supporting		
T 5/21	10A-12P	J. Marley	
T 6/18	10A-12P	J. Marley	
T 7/23	10A-12P	J. Marley	
Swain Center, Room 125			
T 8/20	10A-12P	J. Marley	

**CSP 4000 - Independent Study Ceramics:** Self-directed, independent study for experienced individuals. Participants will get open access to the studio and can meet weekly with the instructor to review progress. Cost of materials not included. Prerequisites: Portfolio review or Beginning Wheel.

Swain Center, Room 125	1.6 hrs, 0CEU. Self-supporting		
Th 5/2-5/30	1-3P	J. Marley	\$65
Th 6/6-6/27	1-3P	J. Marley	\$65
Th 7/11-8/1	1-3P	J. Marley	\$65
Th 8/8-8/29	1-3P	J. Marley	\$65

### GLASS

**PRC 3104 - Beginning Glass:** An Introduction to glass blowing and the glass studio. Cost of materials not included. Prerequisite: None.

Off Campus - Jackson County Green Energy Park	24 hrs, 2.4 CEU.		
T,F 7/9-8/2	4-7P	C. Johnson	\$70

### PRINTMAKING & LETTERPRESS

**CSP 4000 - Intro to Linoleum Block Printing:** An introductory class in block printing. Students will learn basics of linoleum printing, including carving, inking and printing by hand and on the etching press. Prerequisite: None.

Swain Center, Room 110	3.0 hrs, 0CEU. Self-supporting		
F 6/14	10A-1P	A. Kirtley	\$27

**CSP 4000 - Cherokee Language Printing:** This class will explore printing in the Cherokee language, including historical and contemporary developments. Min. 4, Max 10. Cost of materials included. A great class for all ages. Prerequisite: None.

Swain Center, Room 110	2.0 hrs, 0CEU. Self-supporting		
F 6/14	10A-12P	J. Marley	\$20
F 7/19	10A-12P	J. Marley	\$20

**CSP 4000 - Paddle Fans:** Students will get an introduction to letterpress printing by making two-sided paddle fans for parties, events and other hot times! One side will be a typeset greeting/information and the other, the student's own design carved from a linoleum block. Prerequisite: None.

Swain Center, Room 110	4.0 hrs, 0CEU. Self-supporting		
S 6/15	10A-2P	A. Kirtley	\$35

**CSP 4000 - Greeting Cards & Postcards:** An introduction to letterpress printing. Students will design and print their own greeting cards and postcards using letterpress printing for the text and an image of their own design that they will carve in linoleum. Prerequisite: None.

Swain Center, Room 110	4.0 hrs, 0CEU. Self-supporting		
F 7/19	10A-2P	A. Kirtley	\$35

**CSP 4000 - Make a Broadside:** Students will get an introduction to letterpress printmaking by making a poster on the press! Students can make band posters, party posters, various announcements or print poems or manifestos, all in service of learning how to use SCC's proof presses. The class will be an introduce participants to lino carving, typesetting, and printing. Prerequisite: None.

Swain Center, Room 110	4.0 hrs, 0CEU. Self-supporting		
S 7/20	10A-2P	A. Kirtley	\$35

**CSP 4000 - Make a Blank Book:** Students will get an introduction to print and book arts by designing and printing their own book cover for a journal or scrapbook. Participants will learn several simple and versatile book-binding styles to sew up their own blank books. Prerequisite: None.

Swain Center, Room 110	4.0 hrs, 0CEU. Self-supporting		
S 8/10	10A-2P	A. Kirtley	\$35

**Don't see a time that fits your schedule?**

.....Give us a call!

We can set up a class to meet your needs. To learn more information call 828.366.2005 OR email [j\\_marley@southwesterncc.edu](mailto:j_marley@southwesterncc.edu).

## HERITAGE ARTS

**CSP 4000 - Independent Study Print:** Self-directed, independent study for experienced individuals. Participants will get open access to the studio and can meet bi-weekly with the instructor to review progress. Cost of materials not included. Prerequisites: Review of previous experience.

Swain Center, Room 110			
1 hrs, 0 CEU. Self-supporting			
F	5/3-5/31	9-9:30A	J. Marley \$40
F	6/7-6/28	9-9:30A	J. Marley \$40
F	7/12-8/2	9-9:30A	J. Marley \$40
F	8/9-8/30	9-9:30A	J. Marley \$40

**CSP 4000 - Stencil a Shirt:** Bring a shirt and learn how to make stencils to create your own custom tee shirts! Each student should bring a lite colored shirt and all other materials will be provided. Prerequisite: None.

Swain Center, Room 110			
2.0 hrs, 0 CEU. Self-supporting			
Th	6/20	6-8P	A. Kirtley \$24
Th	7/18	6-8P	A. Kirtley \$24

### PAINTING & DRAWING

**CSP 4000 - Sketching Outside:** Explore a variety of subjects found in nature. Great for individuals with beginning to intermediate level drawing skills. Students should bring a sketchbook, pencils, pens, and any other drawing materials they would like to use. All ages welcome. Prerequisite: None

Swain Center, Room 114			
1 hours, No CEU, Self-supporting			
F	6/7	12-1P	J. Marley \$10
F	6/14	12-1P	J. Marley \$10
F	7/12	12-1P	J. Marley \$10
F	7/19	12-1P	J. Marley \$10
F	8/9	12-1P	J. Marley \$10

**CSP 4000 - Plein Air Painting:** This 1-day workshop will focus on oil painting outside, drawing inspiration from our mountain landscape. Students will need a French or box easel, brushes, oil or acrylic paint, pallet, mediums, and towels for cleaning. In case of rain, the class will move to a covered area. Cost of materials not included. Prerequisites: None.

Swain Center, Room 110			
3 hrs, 0 CEU. Self-supporting			
F	6/7	10A-12P	J. Marley \$20
F	7/12	10A-12P	J. Marley \$20
F	8/9	10A-12P	J. Marley \$20

### PERSONAL SKILLS

**CSP 4000 - Bonsai:** Learn the Japanese Art of Bonsai! Students will learn the basic principles and ideas of Bonsai while shaping their first tree. Cost of trees not included; trees will be available for purchase (\$10). Prerequisites: None

Swain Center, Room 114			
2 hrs, 0 CEU. Self-supporting			
W	5/22	10A-12P	K.Taylor \$18
W	6/26	10A-12P	K.Taylor \$18
W	7/24	10A-12P	K.Taylor \$18

**CSP 4000 - Intro to Weaving:** Learn the basics of loom weaving! This short class will get you started using a simple cardboard loom to create a small woven piece. All materials provided. Prerequisites: Must be 16yrs of age.

Swain Center, Room 114			
2 hrs, 0 CEU. Self-supporting			
W	7/10	10A-12P	K. Taylor \$18

**CSP 4000 - Essential Oils:** Learn how to extract your own essential oils from plants and herbs. Participants will also learn creative ways to use their oils. Prerequisites: None.

Swain Center, Room 114			
2 hrs, 0 CEU. Self-supporting			
W	8/7	10A-12P	K. Taylor \$18

**CSP 4000 - Hammered Sterling Jewelry:** Students will make a Hammered Sterling Ring and Hammered Dangle Sterling Earrings. Participants will use a variety of jewelry tools to cut, punch, and solder their ring and pair of earrings from Sterling silver stock. Cost of materials: \$25. Prerequisites: None.

Swain Center, Room 114			
2.5 hrs, 0 CEU. Self-supporting			
Th	7/18	6-8:30P	A. Gernandt \$21
W	7/24	9:30A-12P	A. Gernandt \$21

SCC CERAMIC ARTS CLUB PRESENTS

# Heritage Arts SUMMER FESTIVAL

SAT. JULY 13  
10a.m. - 4p.m.

FREE ADMISSION & PARKING

ART, CRAFT, FOOD, MUSIC, DANCE,  
& DEMONSTRATIONS

SCC SWAIN CENTER (On Hwy 74)  
60 Almond School Rd, Bryson City, NC 28713

Southwestern  
COMMUNITY COLLEGE  
NANTAHALA SCHOOL FOR THE ARTS  
BRYSON CITY  
North Carolina

## Job Opportunities

*Ingles offers a diverse range of career opportunities in thriving environments. We are an innovative, successful company, thanks to the professionalism, diversity, and responsiveness of our associates.*

*Ingles is an equal opportunity employer and does not discriminate against otherwise qualified applicants on the basis of race, color, creed, religion, ancestry, age, sex, national origin, disability or handicap, or veteran status.*

**ingles**

LOW PRICES...  
LOVE THE SAVINGS!



**Now Hiring!**

Join our team and grow a career you'll love! Visit [inglescareers.com](http://inglescareers.com) today!



## CHEROKEE HOME CENTER

We proudly carry:



1623 ACQUONI ROAD • CHEROKEE  
828-497-8980 • [cherokeehomecenter.net](http://cherokeehomecenter.net)

# LOOK What's Available

# "ME"

For information on advertising in this product call your **Smoky Mountain News** Sales Representative.

AMANDA BRADLEY • 828.273.2208  
JC-ADS@SMOKYMOUNTAINNEWS.COM  
HYLAH BIRENBAUM • 828.452.9283  
HYLAH@SMOKYMOUNTAINNEWS.COM  
GREG BOOTHROYD • 828.452.4251  
ADS@SMOKYMOUNTAINNEWS.COM  
SUSANNA BARBEE • 828.279.5123  
SUSANNA.B@SMOKYMOUNTAINNEWS.COM

## WNC's Largest Andersen Windows & Doors Dealer

WINDOWS • DOORS  
**Andersen**

*Come home to Andersen.*

Your Dream Home in the Mountains  
Begins & Ends With Us.

Locations Serving All of WNC

Waynesville Showroom & Design Center  
100 Charles St. Waynesville NC  
828.456.6051

Cashiers Design Center  
448 W US Hwy 64, Ste 4 Cashiers NC  
828.743.3508

Andersen -  
The most trusted  
name in windows  
and doors

Asheville Design Center  
481 Hendersonville Rd Asheville NC  
828.298.4597

**HAYWOOD**  
BUILDERS SUPPLY

Haywood Builders Supply

Non Profit Org.  
U.S. Postage  
PAID  
Waynesville, NC  
Permit #19  
ECRWSS

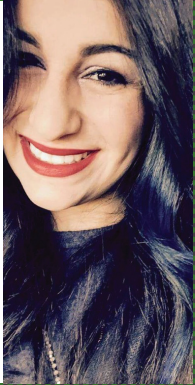
Residential Customer

  
**Sophisticut**  
Hair Salon & Day Spa

308 Depot St • Franklin • 828.524.2419 or 828.524.3395  
Open Monday-Friday 9-5 • Saturday 9-2  
[www.sophisticutsalonandspa.com](http://www.sophisticutsalonandspa.com)  
Aveda • Paul Mitchell • Matrix • Pureology • Redken



**Hannah Whittington** is a Redken and TIGI specialist with 7 years of experience. Hannah specializes in color correction, vivid coloring, balayage, ombre and color melt. Her clients praise her for being able to create unique designs while maintaining the integrity of the hair.



**Sara Shook** is an extremely talented hair artist, well versed in innovative and current coloring techniques such as foil highlighting, balayage, shadow root and ombre. She also specializes in the most luxurious nail services, including soothing pedicures and manicures which includes amazing massage and ends treatments with hot towels and shellac.

**Complimentary Olapex Treatment**  
with purchase of any hair color or highlight service.  
*MUST MENTION WHEN BOOKING*



**Free Shellac Upgrade**  
with purchase of manicure + pedicure  
*MUST MENTION WHEN BOOKING*



✦ One Hour Massage  
✦ Manicure ✦ Pedicure  
**\$99<sup>95</sup>**  
Spa Special #1



✦ Facial  
✦ Manicure  
✦ Pedicure  
**\$99<sup>95</sup>**  
Spa Special #2